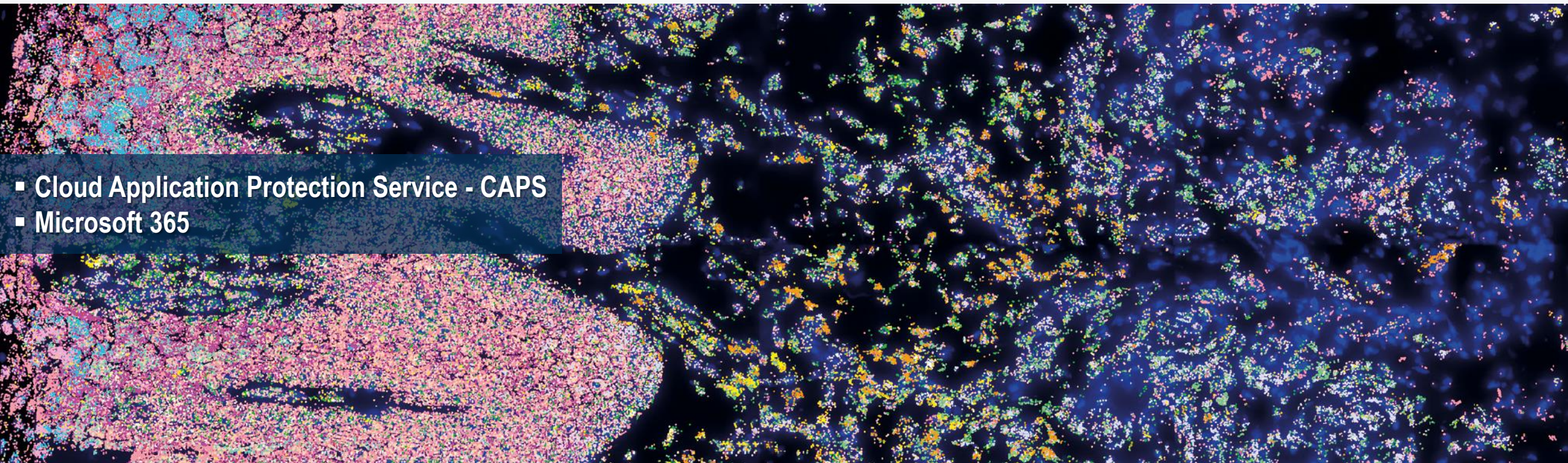
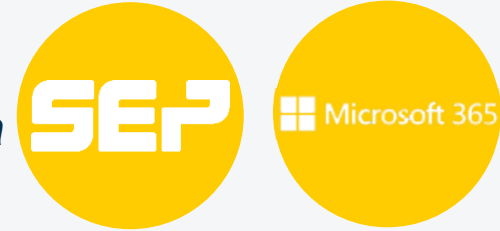


# SEP Kundenreferenz: Resolve BioSciences GmbH



Resolve BioSciences utilises the power of Molecular Cartography™ technology to enable scientists to gain new insights based on the highest resolution view of spatial biology. The complete system features the company's proprietary, highly multiplexed single molecule detection technology that provides full spatial context with subcellular resolution, in a fully automated workflow that is gentle on sample tissue.

*“Thanks to GDPR compliance, secure geo-redundant storage of the blockchain-based encrypted data in data centres within Germany and intuitive handling, SEP CAPS is an integral part of our backup and security concept. The competent German support and the fact that all costs are included in the price round off the package perfectly for us.” Hendrik Horn, Head of IT at Resolve BioSciences GmbH*



- Cloud Application Protection Service - CAPS
- Microsoft 365